



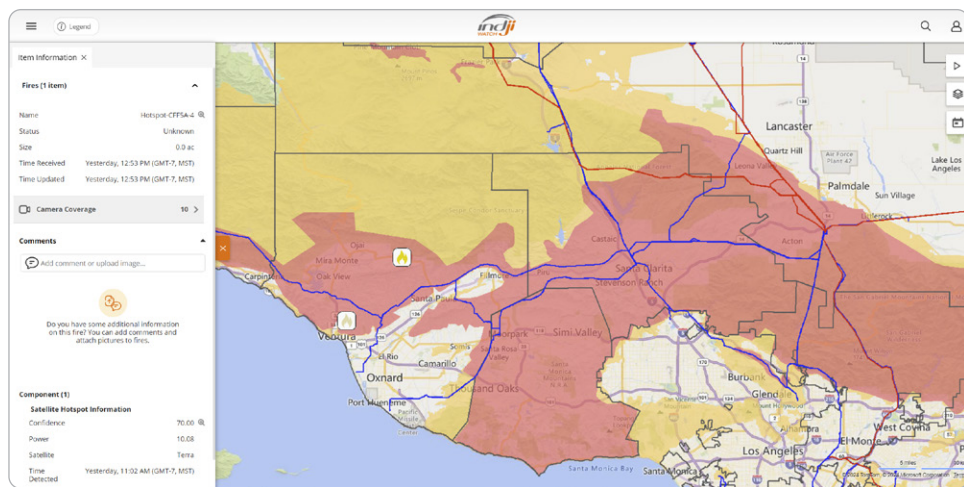
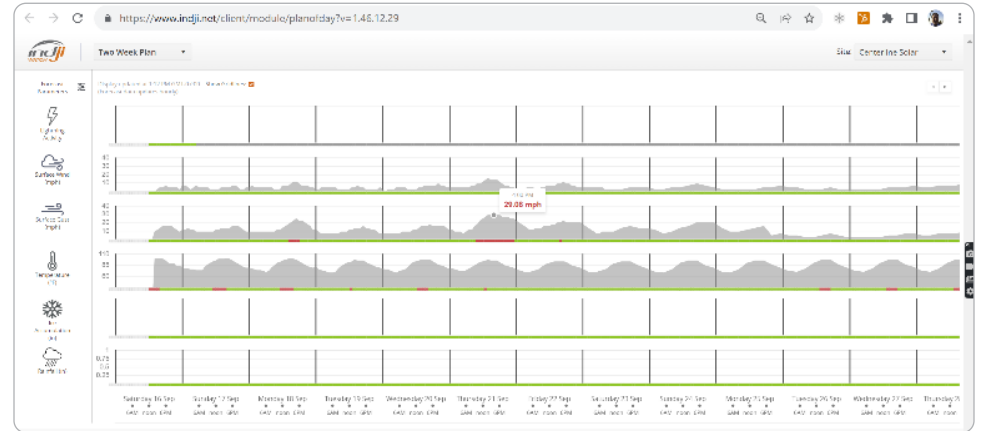
A FIRE WEATHER RISK DECISION TIMELINE



Extended Fire Condition Forecasting – 8-14 Day Awareness of Trends

Indji Watch Two Week Plan Dashboard

Asset specific forecasts for awareness of future high wind events and focus on trends in repeated forecast updates.



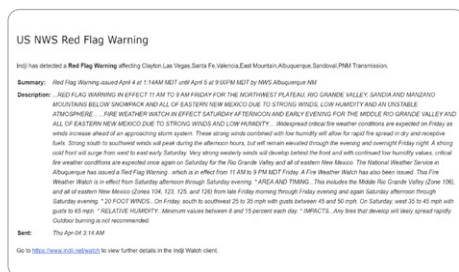
Fire Condition Forecasting 4-7 Days Out

Indji Watch Plan Of Week Hourly Updated Forecasts For Specific Grid Assets

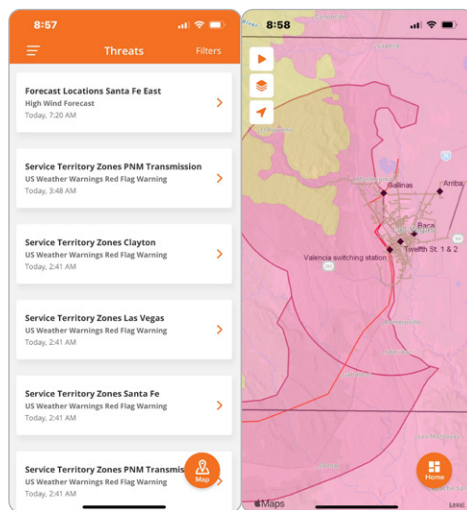
- Identify early high fire risk areas and circuits potentially impacted.
- Begin communication with internal stakeholders for recloser settings, field work modification and possible communication of a proactive power shut-off for high-risk circuits.
- Community outreach to critical customers.

Increase Business Unit Awareness And Readiness With Red Flag Warnings and High Wind Alerts 24-72 Hours Out

Indji Watch's patented monitoring solutions can provide NWS Red Flag Warnings and High Wind alerts specific to a utilities' chosen High-risk Fire Areas, Fire Weather Zones or Grid Operations districts.



Broaden Red Flag and Forecasted High Wind Alert emails to specific service territory zones.

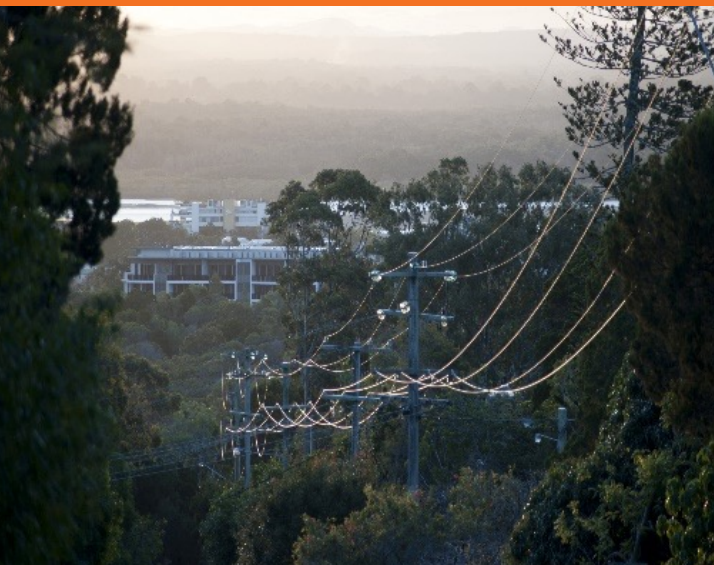


- Easily identify high-risk circuits and communities for potential pro-active power shutoff.
- Control Center and Electric Field Operations begin to coordinate possible recloser setting changes based on expected asset impact.
- Clearly identify areas of field work modification to help prevent ignitions with Red Flag alerts and Forecast Wind alerts related to the high-risk zones and circuits in a mobile Threat Dashboard.

Location	Surface Wind (mph)	Surface Gust (mph)
Inline - Blake Phwy	40.00	52.00
Long Beach - Lincoln Park	40.00	52.00
Rosemead - Walnut Grove Ave	40.00	52.00
Torrance - Del Amo	40.00	52.00

Move beyond National Weather Service alerts with asset specific forecasts and custom alert thresholds.

12-48 Hours Fire Condition Forecasting Alerts

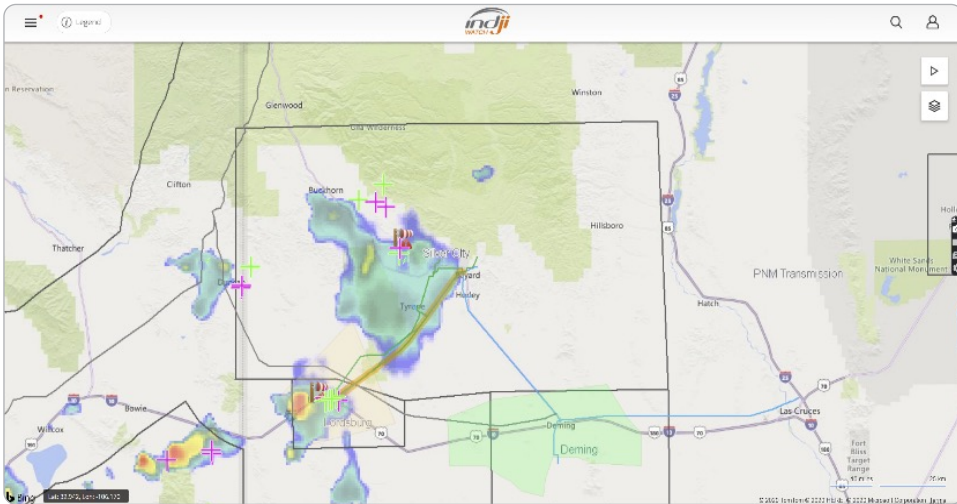


- Electric Field Operations can pre-position crew and materials
- Managers can adjust shifts and personnel levels
- Patrol personnel can monitor at-risk vegetation and conductors
- Control Centers begin to modify recloser setting changes, with Red Flag Warnings and asset specific forecast high wind alerts

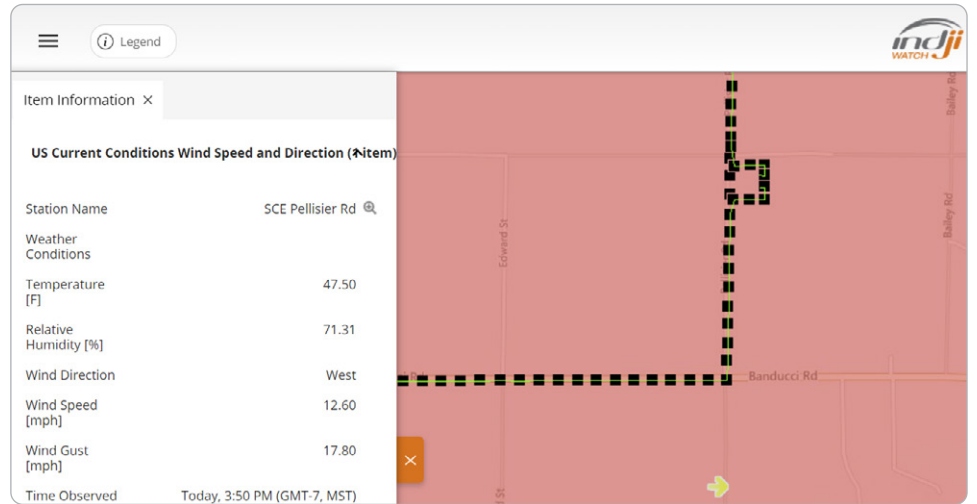


A FIRE WEATHER RISK DECISION TIMELINE

Real-time to 12 hours monitoring of severe storms by the control centers allow systems operators to respond more quickly to dynamic weather and wildfire events.

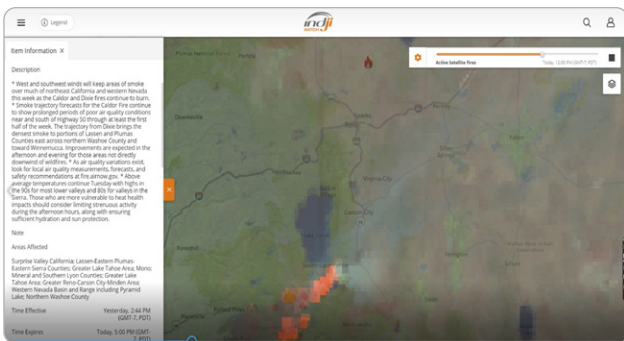


8+ hour forecast radar and forecast lightning animations allow for planning of lightning and microburst damaging wind events.

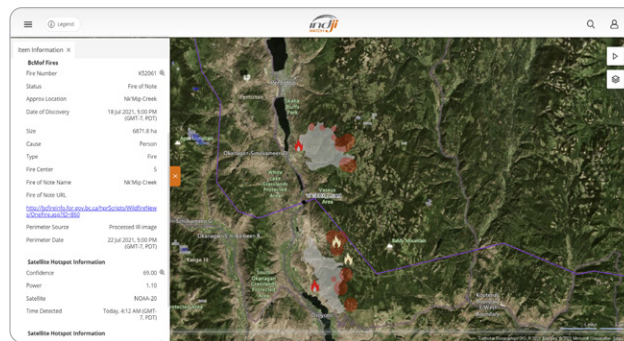


Public and Utility owned integrated weather stations access allows Indji Watch users to see the real-time damaging wind gust and direction updates directly in relationship to grid assets in high-fire risk areas.

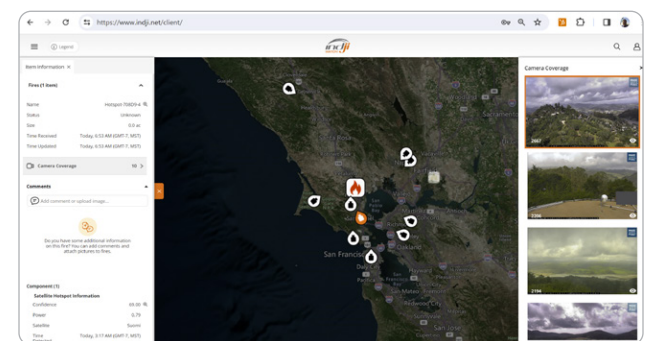
Indji Watch's patented alerting method provides high-probability satellite hot spot alerts and wildfire alerts based on utility defined distances to circuits



High-probability satellite hotspot alerts for early detection of ignitions near grid assets from mechanical, lightning or even blowing embers. Animate hotspots and smoke direction.



Wildfire response personnel and grid operators respond to asset specific alerts of agency reported fires within custom thresholds, inspect the details of the fire, view satellite reported leading edges and communicate between shifts.



Grid operators have instant access to the smoke detection cameras closest to a wildfire or satellite hotspot with integrated asset awareness and access to full camera site at their fingertips.

Restoration Day 1+



- Grid operators and Electric Field Operations begin inspections and restoration.
- Helicopter and drones can speed inspections and restoration. Most drones are limited to sustained winds of 20 – 25mph, and bucket trucks at 30-35mph. The Indji Watch forecast dashboards and alerting tools can help utilities know when drones can be available, and other specialized equipment used safely.
- For Troublemaker, Lineworkers and any mobile personnel, continued safety is the key during restoration. Indji Watch alerts and mobile weather tools provide awareness of lightning challenging the grid, or any severe weather that could impede travel or maintenance.