



FORECAST DATA

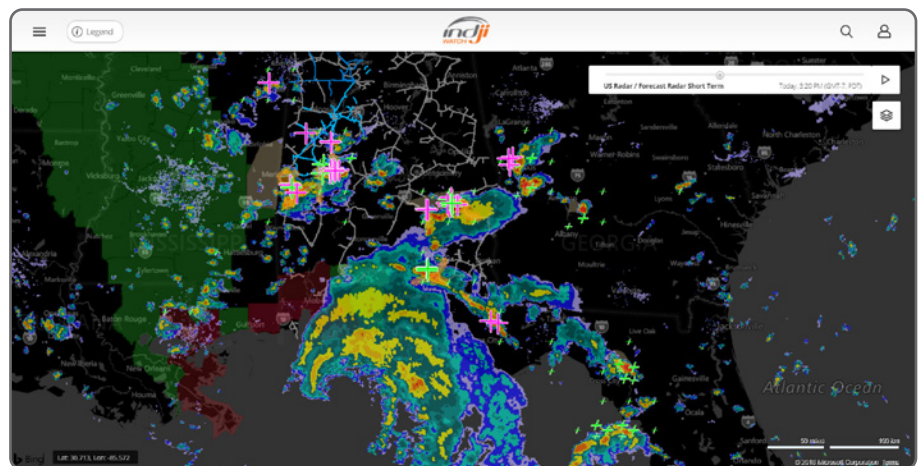
Get insight into upcoming potential hazardous weather that could adversely impact your organization with forecasting tools from Indji Watch:

- Forecast RADAR
- Forecast LIGHTNING
- Forecast SUMMARY
- Forecast ALERTING

At Indji Systems, we believe electric utility and gas transmission operations should have access to the most accurate forecasting data available, giving you the ability to plan ahead for severe weather threats. With the Indji Watch advanced Forecast Radar and Forecast Lightning, you can see storms and potential lightning predicted for the upcoming eight hours, in relation to each of your assets. Our Forecast Summary provides daily or hourly forecasts for multiple environmental conditions and powers Indji Watch alerts for forecasts of extreme temperatures, high winds and icing events.

FORECAST RADAR

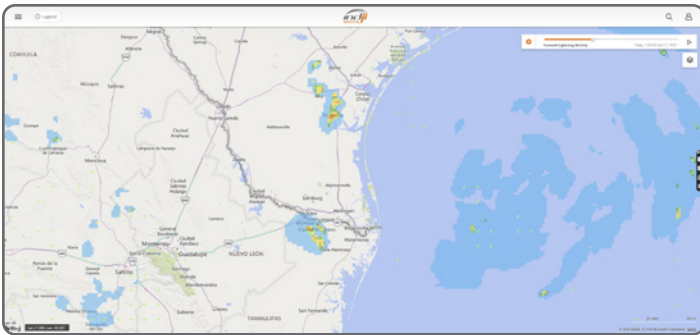
Knowing when your assets are in the path of an approaching storm is critical for making decisions about the grid and team safety. Indji Watch employs NOAA's real-time, 3km High-Resolution Rapid Refresh (HRRR) weather model. Developed by Earth Systems Research Lab in Boulder, Colorado, this atmospheric model is the only weather model in the world to update every hour. It can forecast the rise, decay and path of storms in the upcoming eight hours with greater accuracy than any other source.



Forecast radar during Tropical Storm Gordon



FORECAST DATA



Forecast lightning affecting feeders

FORECAST LIGHTNING

Lightning can cause a line fault, damage equipment and more importantly, injure operators working on a line. For these reasons, Indji Watch has supplemented our world class real-time lightning alerting with a Forecast Lightning animation tool. This tool takes advantage of NOAA's HRRR weather model which provides a forecast of lightning development and movement over the next eight hours and the density of the lightning storms. The Indji Watch Forecast Lightning animation layer will allow operators to assess the movement and intensity of lightning storms in relationship to their grid assets for potential outage planning and permit construction and field maintenance crew managers to better schedule their human and material resources while minimizing risk to employees.

Location	Today May 19	Tomorrow May 20	Thu May 21	Fri May 22	Sat May 23	Sun May 24
4886 W 48th Ave, Amarillo, TX, 79121	Sunny Breezy	Partly Cloudy Breezy Thunderstorms Likely	Sunny Breezy	Sunny	Partly Sunny Breezy	Partly Cloudy Breezy Thunderstorms Likely
Temp	65.3 87.9 °F	58.3 76.6 °F	57.7 89.1 °F	52.4 88.2 °F	60.4 91.1 °F	57.9 79.1 °F
Dew Point	57.2 76.8 °F	56.0 69.2 °F	24.0 58.7 °F	33.6 57.7 °F	57.0 70.0 °F	48.1 52.9 °F
Feels Like	65.1 88.3 °F	55.4 76.5 °F	53.6 89.1 °F	50.0 88.2 °F	57.2 91.1 °F	55.4 79.1 °F
Surface Wind Speed (miles per hour)	9.8 16.9 14.3 mph	6.2 17.9 14.9 mph	9.8 18.8 13.3 mph	1.1 21.3 9.5 mph	14.0 22.8 17.6 mph	6.9 16.2 11.2 mph
Surface Wind Gust	25.0 mph	27.0 mph	32.0 mph	39.0 mph	37.0 mph	22.0 mph
Precip Probability	25.0 %	60.0 %	0.0 %	0.0 %	0.0 %	20.0 %
Thunderstorm Probability	70.0 %	90.0 %	0.0 %	0.0 %	0.0 %	50.0 %
Precipitation Type	Rain	Rain	Rain	Rain	Rain	Rain
Daily Precipitation	0.02 in	0.37 in	0.00 in	0.00 in	0.00 in	0.06 in
Wt Accum, Near Surface	0.00 in	0.00 in	0.00 in	0.00 in	0.00 in	0.06 in
Wt Accum, Elevated	0.00 in	0.00 in	0.00 in	0.00 in	0.00 in	0.06 in
Relative Humidity	77.0 77.0 %	74.0 87.0 %	100.0 100.0 %	75.0 90.0 %	72.0 63.0 %	70.0 62.0 %
Cloud Coverage	0.0 51.0 %	35.0 85.0 %	0.0 36.0 %	5.0 20.0 %	5.0 47.0 %	20.0 85.0 %
Solar Irradiance	8054 W/m ²	6465 W/m ²	8421 W/m ²	8182 W/m ²	8182 W/m ²	6054 W/m ²

Indji Watch Forecast Summary

FORECAST SUMMARY

The Forecast Summary will provide you with a seven-day forecast of multiple weather parameters including extreme temperature, high winds, and ice accumulation among others. The forecast locations are chosen by you to better reflect the forecasts for your grid assets and known problem areas within the service territory. This can be viewed daily or hourly for a seven-day time period. The weather forecast is updated hourly using the latest weather observations, radar data and model information so you can confidently schedule maintenance and repairs.



Wind Forecast Alert

Indji has detected surface gust forecast exceeding 20 mph at Amarillo at the following times:

- 6PM on Aug 16 until 7PM on Aug 16

Go to <https://www.indji.net/watch> to view further details in the Indji Watch client.



Copyright © 2020 Indji Systems, All rights reserved.
You are receiving this email because you are subscribed to email alerts for the Indji Watch business rule 'Amarillo'. Please notify your corporate Indji Watch contact if you would like to unsubscribe from these alerts.

To find out more about Indji Watch, visit our web site at watch.indji.com

Time Sent: 2:14 AM, Aug 16, 2020 (UTC-07:00)

FORECAST ALERTING

With Indji Watch, you have the ability to set extreme temperature, high wind or ice accumulation thresholds important to your organization. Indji Watch will monitor the set parameters and alert you if these thresholds are forecast to be exceeded in the next few hours or even 48 hours in advance, so you can focus on important operational matters instead of watching the weather.